



Suitable for Residential
and Commercial use.

SPECTRUM SERIES

LUNAR SOLAR CCTV

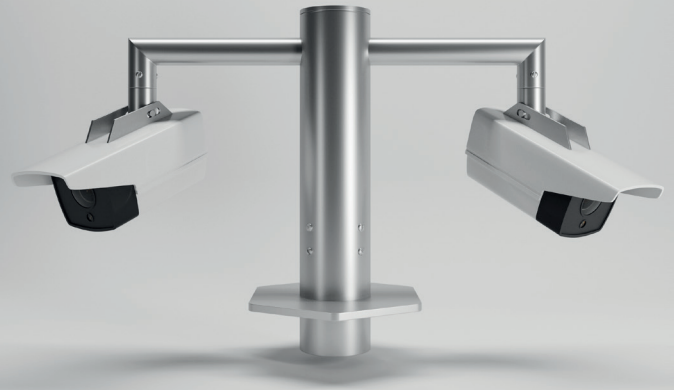
solarvisionlt.co.uk

SOLAR
VISION
LIGHTING TECHNOLOGIES

LUNAR SOLAR CCTV

TECHNICAL SPECIFICATIONS

Product Type	HIKVISION		
Code	DS-2XS6A87G1-L		
Camera Kit	4K ColorVu Fixed Bullet Solar Power 4G Network Camera Kit <ul style="list-style-type: none"> • High quality imaging with 8 MP@ 15fps resolution • 24/7 Colorful imaging • Clear imaging against strong back light due to 120 dB true WDR technology 		
General			
Power	12 VDC \pm 20%, \varnothing 5.5 mm coaxial power plug 1. Standby power consumption: 53 mW 2. The average power consumption of 24 hours: 2W (4G transmission is excluded). 3. The max. power consumption: 3.2 W		
Material	Front Cover: Metal - Body: Metal - Bracket: Metal		
Camera			
Image Sensor	1/1.2" Progressive Scan CMOS		
Min. Illumination	Colour: 0.0005 Lux @ (F1.0, AGC ON), B/W: 0 Lux with white light		
Max. Resolution	3840 x 2160		
Shutter Time	1 s to 1/100,000 s		
Lens			
Focal Length & FOV	2.8 mm, horizontal FOV: 101.6°, vertical FOV: 52.4°, diagonal FOV: 124° 4 mm, horizontal FOV: 88.2°, vertical FOV: 48.7°, diagonal FOV: 101.8°		
Lens Type	Fixed focal lens, 2.8 and 4 mm optional		
Iris Type	Fixed		
Aperture	F1.0		
Lens Mount	M20		
DORI			
DORI	2.8 mm: D: 44 m, O: 17.5 m, R: 9 m, I: 4.5 m 4 mm: D: 53 m, O: 21 m, R: 11 m, I: 5 m		
Illuminator			
Supplement Light Type	White Light		
Supplement Light Range	Up to 30 m		
Smart Supplement Light	Yes		
Video			
Main Stream	50 Hz: 12.5 fps (3840 x 2160, 2688 x 1520, 1920 x 1080, 1280 x 720) 60 Hz: 15 fps (3840 x 2160, 2688 x 1520, 1920 x 1080, 1280 x 720)		
Sub-Stream	50 Hz: 12.5 fps (640 x 480, 640 x 360) 60 Hz: 15 fps (640 x 480, 640 x 360)		
Video Compression	Main stream: H.265 / Sub-stream: H.265/MJPEG *Full power mode: main stream supports H.265+		
Video Bit Rate	32 Kbps to 16 Mbps		
Network			
Simultaneous Live View	Up to 6 channels		
API	Open Network Video Interface (Profile S, Profile G, Profile T), ISAPI, SDK, ISUP		
Security	Password protection, complicated password, HTTPS encryption, 802.1X authentication (EAP-MD5), watermark, IP address filter, basic and digest authentication for HTTP/HTTPS, WSSE and digest authentication for Open Network Video Interface, RTP/RTSP over HTTPS, control timeout settings, TLS 1.2		



Event			
Basic Event	Motion detection, video tampering alarm, exception (network disconnected, IP address conflict, illegal login, HDD full, HDD error)		
Smart Event	<ul style="list-style-type: none"> • Line crossing detection, up to 4 regions configurable • Intrusion detection, up to 4 regions configurable • Region entrance detection, up to 4 regions configurable • Region exiting detection, up to 4 regions configurable • Unattended baggage detection, up to 4 regions configurable • Object removal detection, up to 4 regions configurable <i>The smart events are only supported under full power mode.</i>		
Linkage	Upload to FTP/NAS/memory card, notify surveillance centre, send email, trigger recording, trigger capture		
Accessory Input			
SIM Card Type	MicroSIM		
On-board Storage	Memory card slot, supports microSD card up to 256GB		
Battery Pack			
Battery Type	Lithium Iron Phosphate - LiFeP04 (2000 Cycles)		
Battery Lifetime	>4000 Cycles DOD 50% or >2000 Cycles at 100% DOD		
Charge Time	3 Hours		
Control System			
Control System	Programmable MPPT Controller / Hybrid Controller / Wireless Intelligent Control		
Solar Charge	Q100	Q140	Q200
Structure	Aluminium Alloy		
Dimensions (mm)	228 x 200 x 1160	228 x 200 x 1560	228 x 200 x 2065
Pmax	100wp x2	140wp x2	200wp x2
Vmp	36V		
Solar Cell Efficiency	21.20%		
Cable	MC4 0.6 meter		
Lifetime	25 Years		
Warranty	3 Years		
Certificates	CE - ROHS - FCC - IP67 - LM80 - COC - IK10 - LM79 - SABER - CB		
Controller			
Charge Mode	MPPT		
System Voltage	12V		
Efficiency	>98%		
Setting Method	By Remote Control		
Installation Method	Built In		
IP Rating	IP68		